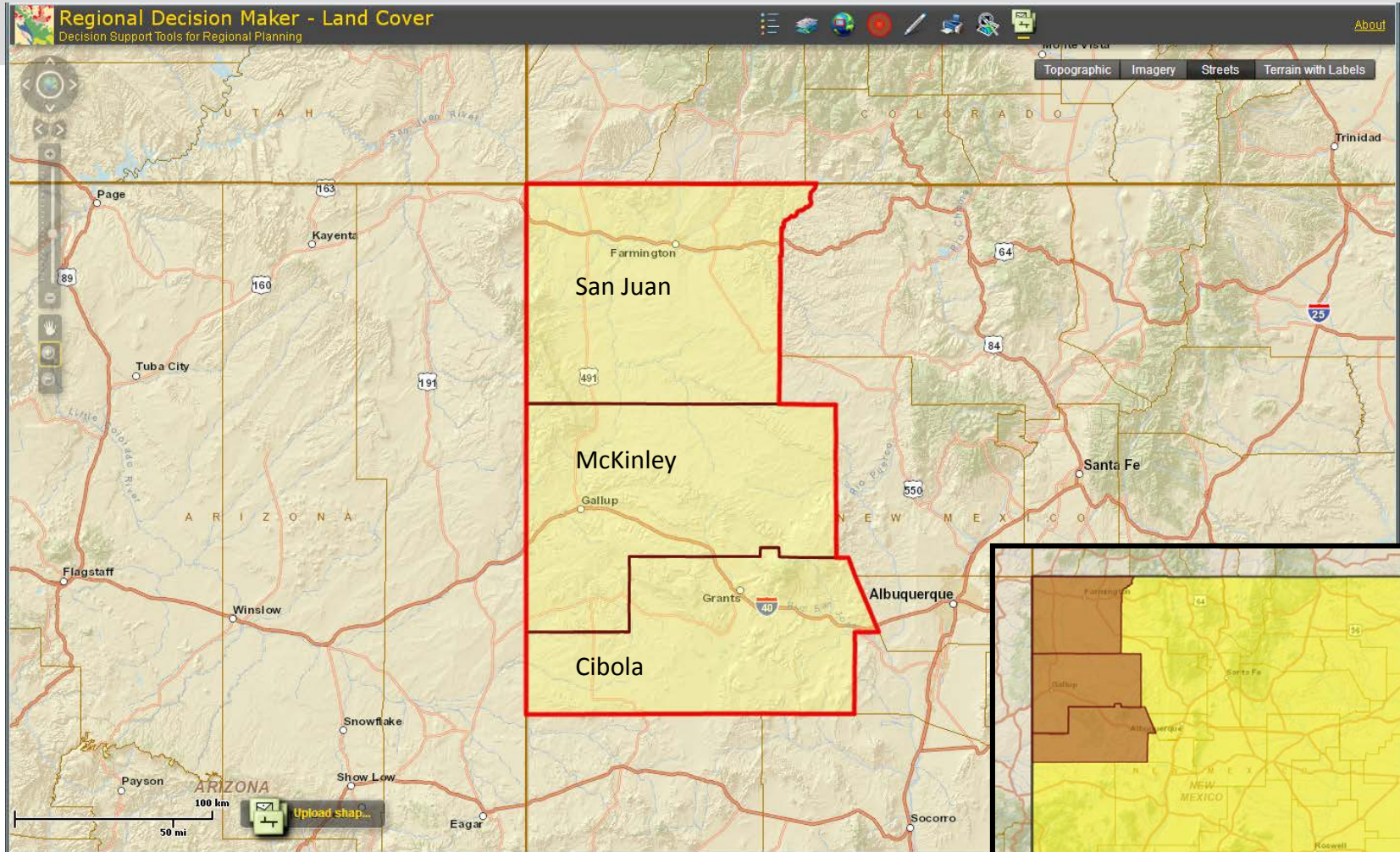
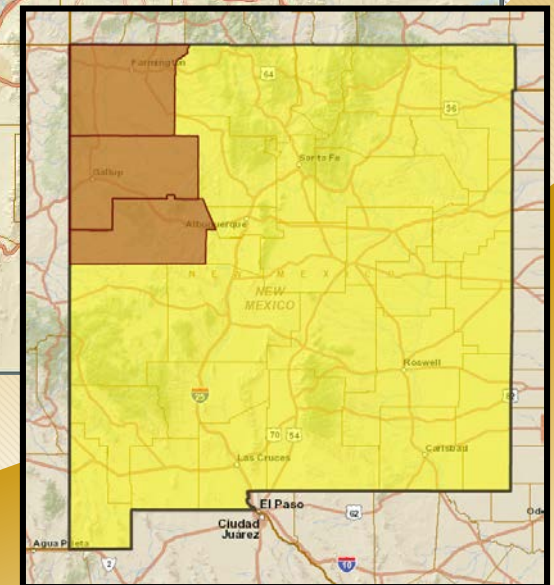


Trails of the Ancients Region

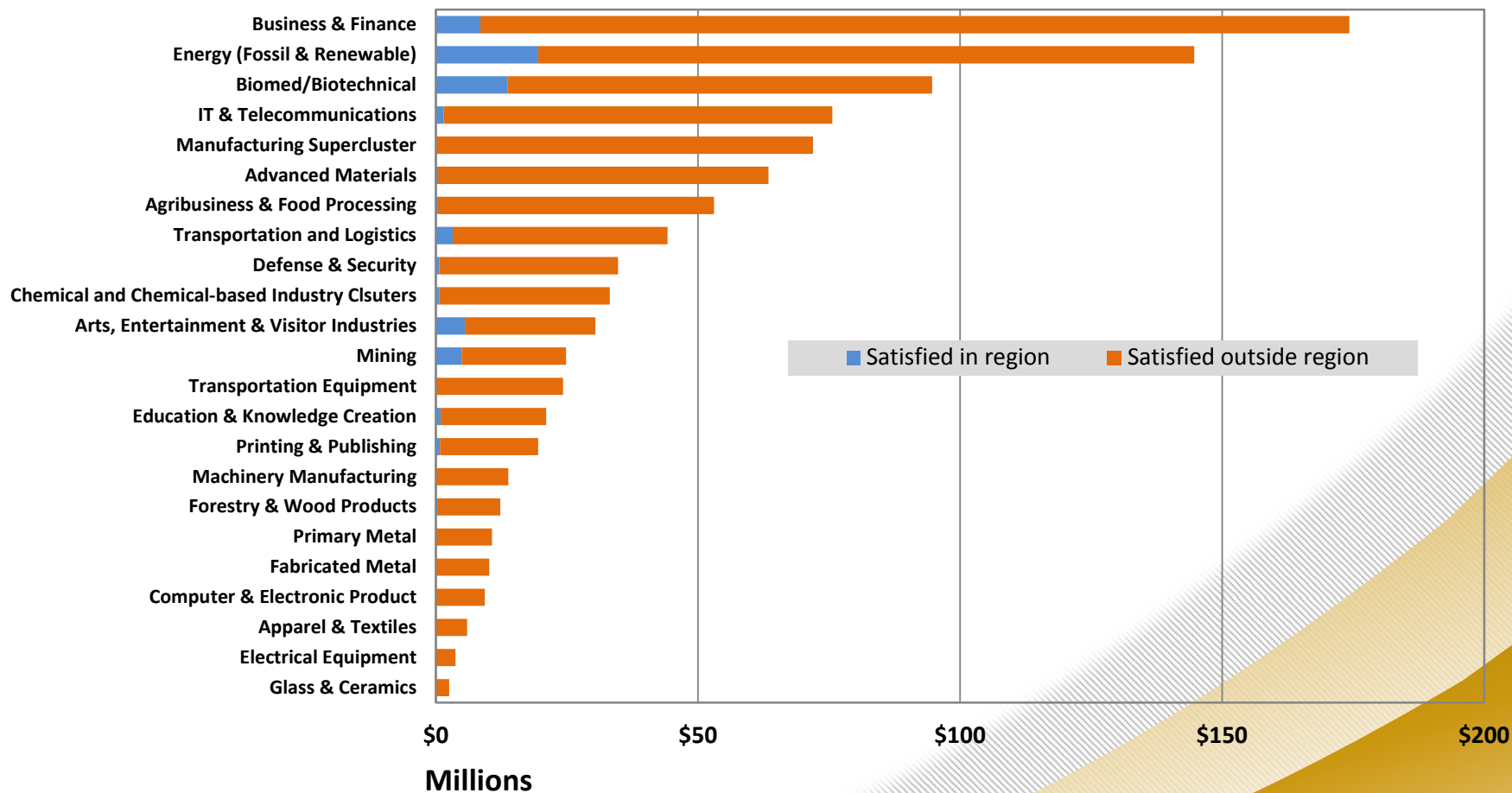


The region includes the following counties:

- Cibola,
- McKinley,
- San Juan

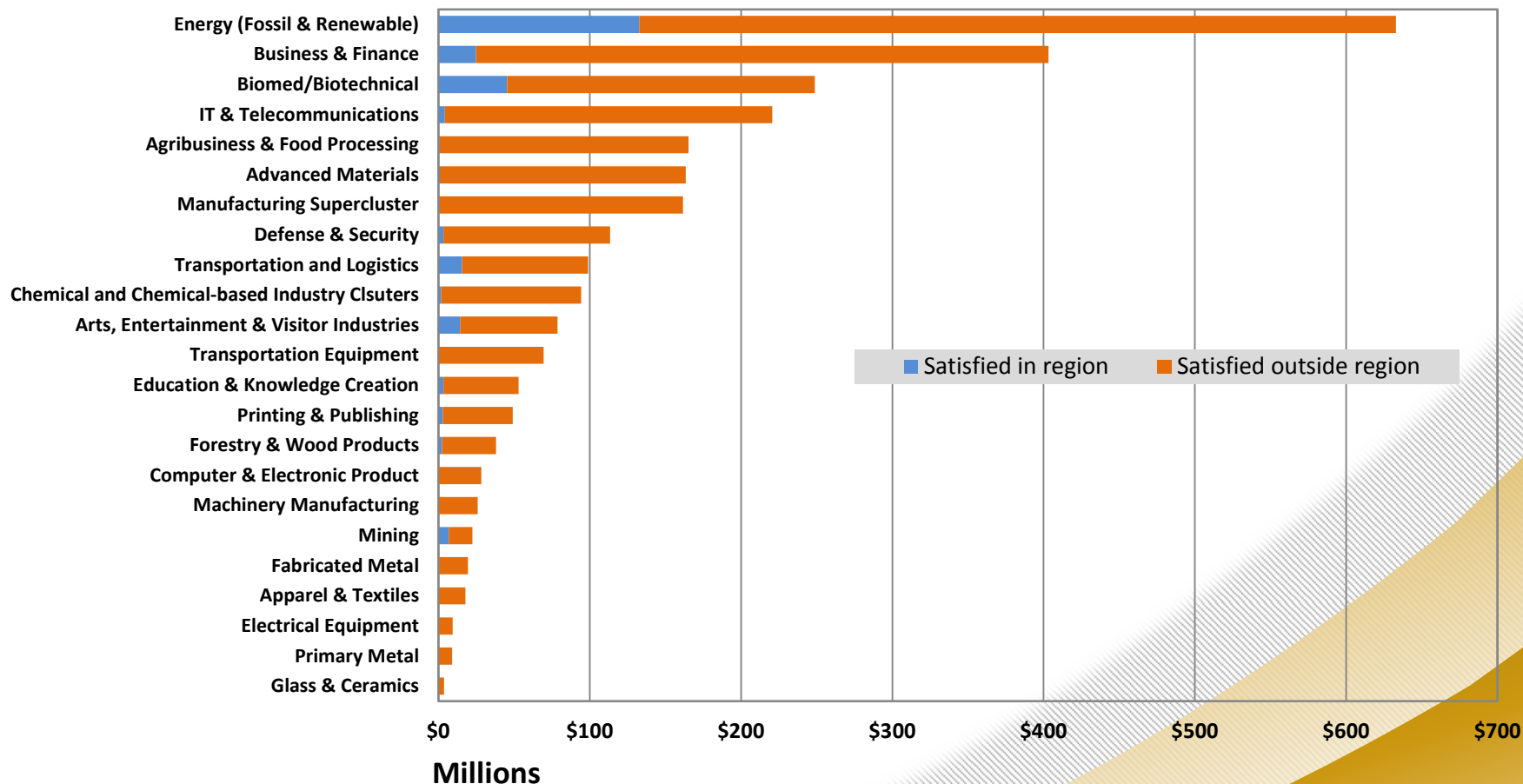


Cibola County Requirements, Expenditures & Leakages, 2012



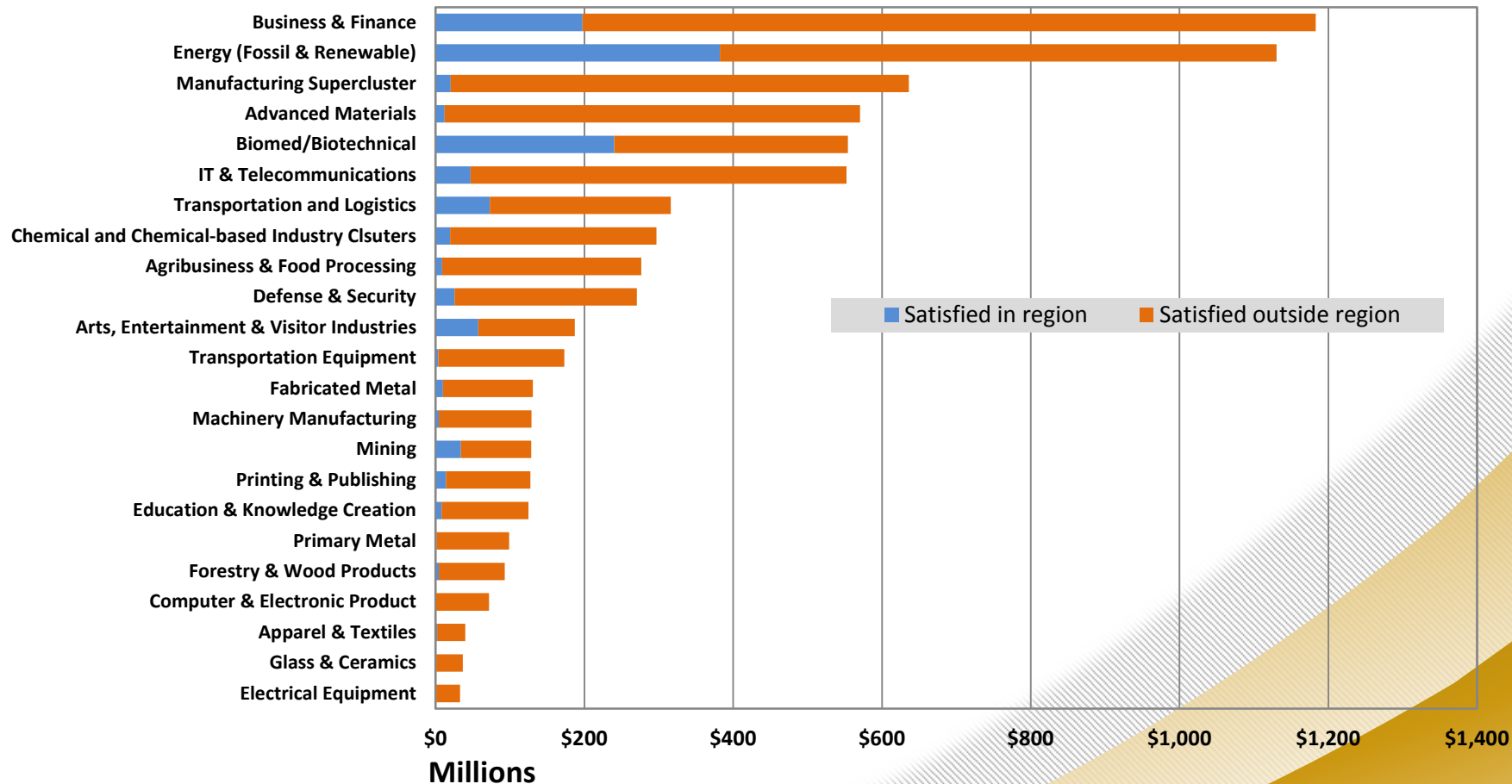
Source: EMSI Complete Employment 2013.2

McKinley County Requirements, Expenditures & Leakages, 2012



Source: EMSI Complete Employment 2013.2

San Juan County Requirements, Expenditures & Leakages, 2012



Source: EMSI Complete Employment 2013.2

Compensation per Job in Constant \$ 2012 by Industry Sectors

Cibola County	2007 (\$/jobs)	2012 (\$/jobs)
Average compensation per job (dollars) 3/	\$ 43,755	\$ 45,711
Farm compensation	\$ 3,886	\$ 2,854
Nonfarm compensation	\$ 37,431	\$ 38,408
Private nonfarm compensation	\$ 30,059	\$ 32,955
Mining	(D)	(D)
Utilities	\$ 65,386	\$ 74,623
Construction	\$ 32,569	\$ 24,547
Manufacturing	\$ 25,546	\$ 17,454
Wholesale trade	\$ 30,538	\$ 38,753
Retail trade	\$ 23,431	\$ 25,973
Transportation and warehousing	\$ 38,717	\$ 50,600
Information	\$ 51,009	\$ 20,136
Finance and insurance	\$ 30,928	\$ 29,442
Real estate and rental and leasing	\$ 4,241	\$ 16,934
Professional, scientific, and technical services	(D)	(D)
Management of companies and enterprises	(D)	(D)
Administrative and waste management services	\$ 35,140	\$ 39,021
Educational services	(D)	(D)
Health care and social assistance	(D)	(D)
Arts, entertainment, and recreation	\$ 3,004	\$ 2,878
Accommodation and food services	\$ 15,705	\$ 17,090
Other services, except public administration	\$ 17,497	\$ 20,189

- Compensation per job is calculated based on BEA data, CA 25N and CA 06N
- Total compensation in ('000s) is divided by total jobs in sectors
- 2007 \$ compensation is brought to 2012 \$ by using CPI for South, Size Class B/C, urban consumers, from BLS

Compensation per Job in Constant \$ 2012 by Industry Sectors

McKinley County	2007 (\$/jobs)	2012 (\$/jobs)
Average compensation per job (dollars) 3/	\$ 44,706	\$ 44,271
Farm compensation	\$ 352	\$ 260
Nonfarm compensation	\$ 36,558	\$ 35,858
Private nonfarm compensation	\$ 26,537	\$ 25,773
Mining	\$ 83,980	(D)
Utilities	\$ 88,339	\$ 108,828
Construction	\$ 41,667	\$ 35,840
Manufacturing	\$ 27,680	\$ 34,012
Wholesale trade	\$ 9,258	\$ 9,247
Retail trade	\$ 29,213	\$ 27,161
Transportation and warehousing	\$ 58,758	\$ 52,195
Information	\$ 35,463	\$ 33,421
Finance and insurance	\$ 35,497	\$ 32,714
Real estate and rental and leasing	\$ 18,132	\$ 25,533
Professional, scientific, and technical services	\$ 25,662	\$ 31,641
Management of companies and enterprises	\$ 35,507	\$ 17,688
Administrative and waste management services	\$ 18,061	\$ 20,333
Educational services	\$ 26,600	\$ 31,630
Health care and social assistance	\$ 29,289	\$ 27,650
Arts, entertainment, and recreation	(D)	\$ 3,994
Accommodation and food services	\$ 16,095	\$ 16,446
Other services, except public administration	\$ 20,641	\$ 20,983

- Compensation per job is calculated based on BEA data, CA 25N and CA 06N
- Total compensation in ('000s) is divided by total jobs in sectors
- 2007 \$ compensation is brought to 2012 \$ by using CPI for South, Size Class B/C, urban consumers, from BLS

Compensation per Job in Constant \$ 2012 by Industry Sectors

San Juan County	2007 (\$/jobs)	2012 (\$/jobs)
Average compensation per job (dollars) 3/	\$ 53,994	\$ 56,279
Farm compensation	\$ 3,241	\$ 2,278
Nonfarm compensation	\$ 45,695	\$ 47,121
Private nonfarm compensation	\$ 43,028	\$ 44,771
Mining	\$ 78,580	\$ 86,905
Utilities	\$ 136,628	\$ 141,563
Construction	\$ 47,568	\$ 49,108
Manufacturing	\$ 44,468	\$ 39,032
Wholesale trade	\$ 57,662	\$ 56,608
Retail trade	\$ 28,946	\$ 28,779
Transportation and warehousing	\$ 51,774	\$ 53,249
Information	\$ 40,376	(D)
Finance and insurance	\$ 36,514	\$ 34,581
Real estate and rental and leasing	\$ 17,805	\$ 14,252
Professional, scientific, and technical services	\$ 36,666	\$ 31,223
Management of companies and enterprises	\$ 71,663	\$ 68,781
Administrative and waste management services	\$ 25,446	\$ 27,532
Educational services	\$ 26,716	\$ 21,933
Health care and social assistance	\$ 43,971	\$ 46,805
Arts, entertainment, and recreation	\$ 13,716	\$ 13,312
Accommodation and food services	\$ 16,741	\$ 17,965
Other services, except public administration	\$ 25,166	\$ 25,319

- Compensation per job is calculated based on BEA data, CA 25N and CA 06N
- Total compensation in ('000s) is divided by total jobs in sectors
- 2007 \$ compensation is brought to 2012 \$ by using CPI for South, Size Class B/C, urban consumers, from BLS

PURDUE
UNIVERSITY



CENTER FOR
REGIONAL
DEVELOPMENT

PCRD.PURDUE.EDU

Purdue Center for Regional Development
Purdue University
Gerald D. and Edna E. Mann Hall, Suite 266
203 Martin Jischke Drive
West Lafayette, IN 47907-2057