

# Prewitt-Milan Transportation Master Plan (PMTMP)

Technical Working Group (TWG) Meeting 1  
April 28, 2021

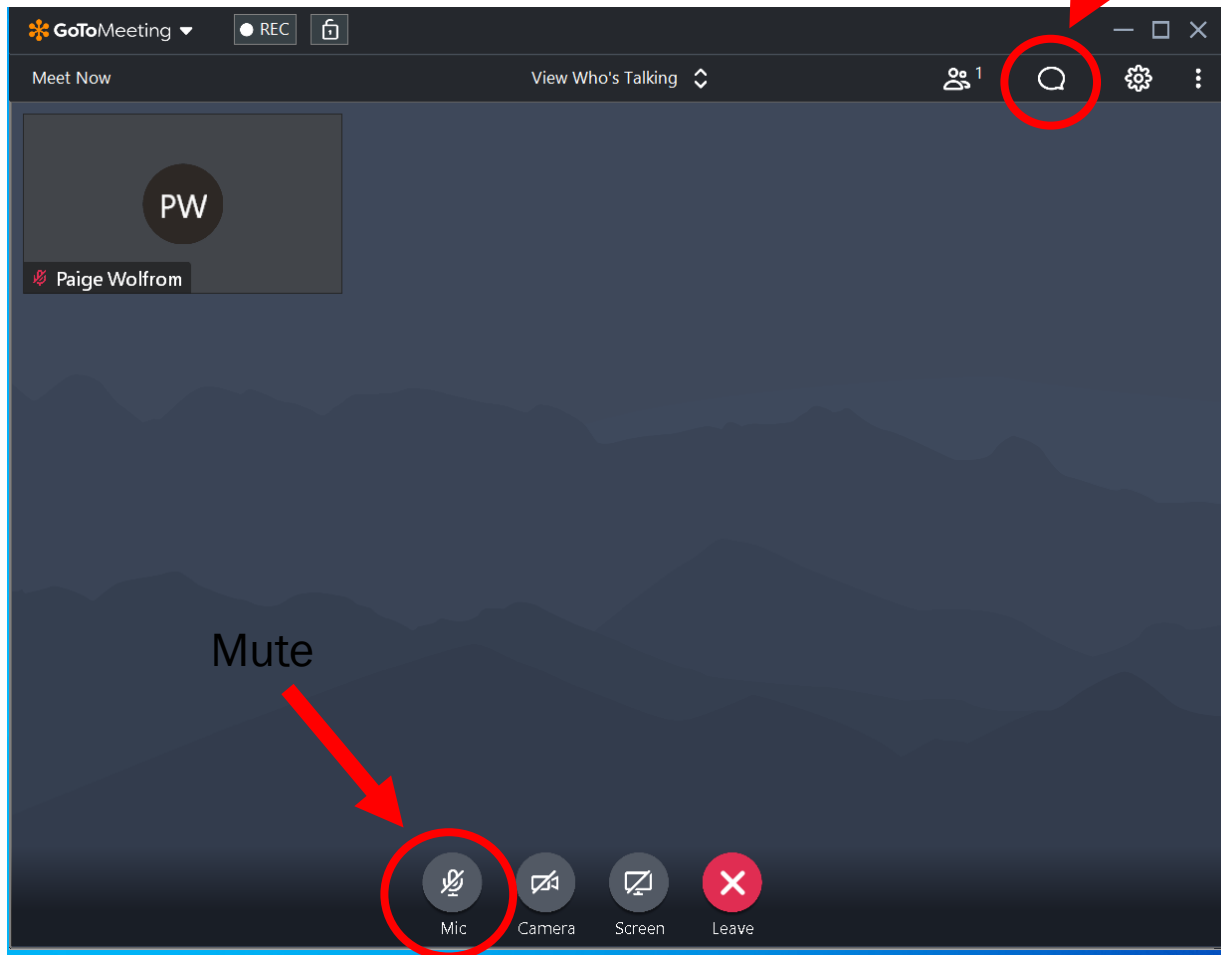
# Agenda

- Welcome & Introductions
- Project Objective & Study Area
- TWG and PAC
- Work Plan
- Previous Recommendations & Plans
- **TWG Vision – Exercise**
- Project Website
- Project Schedule
- Next Steps
- Adjourn

# Housekeeping

- GoTo Meeting

Chat Box



## Project Team

### Northwest New Mexico Council of Governments

- Robert (Bob) Kuipers

### Consultant: Wilson & Company

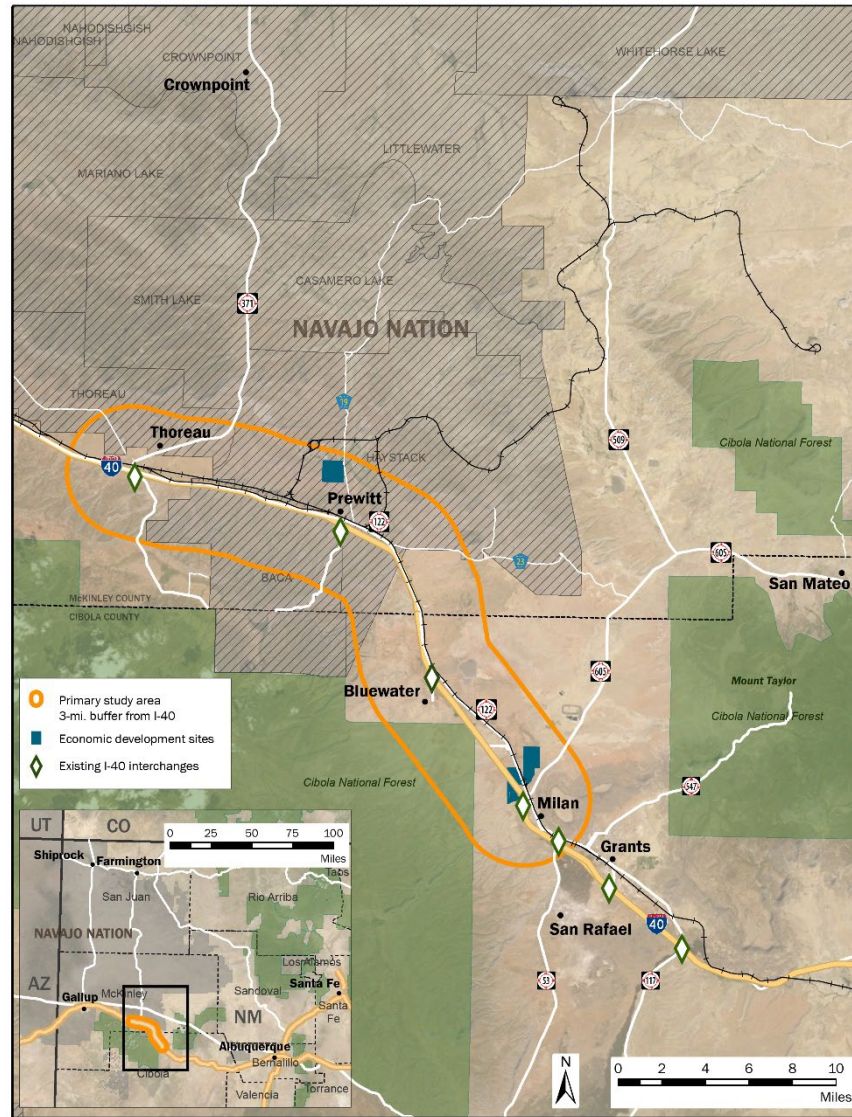
- Jim Townsend, AICP
- Mario Juarez Infante
- Ben Bachwirtz
- Paige Wolfrom

# TWG Introductions

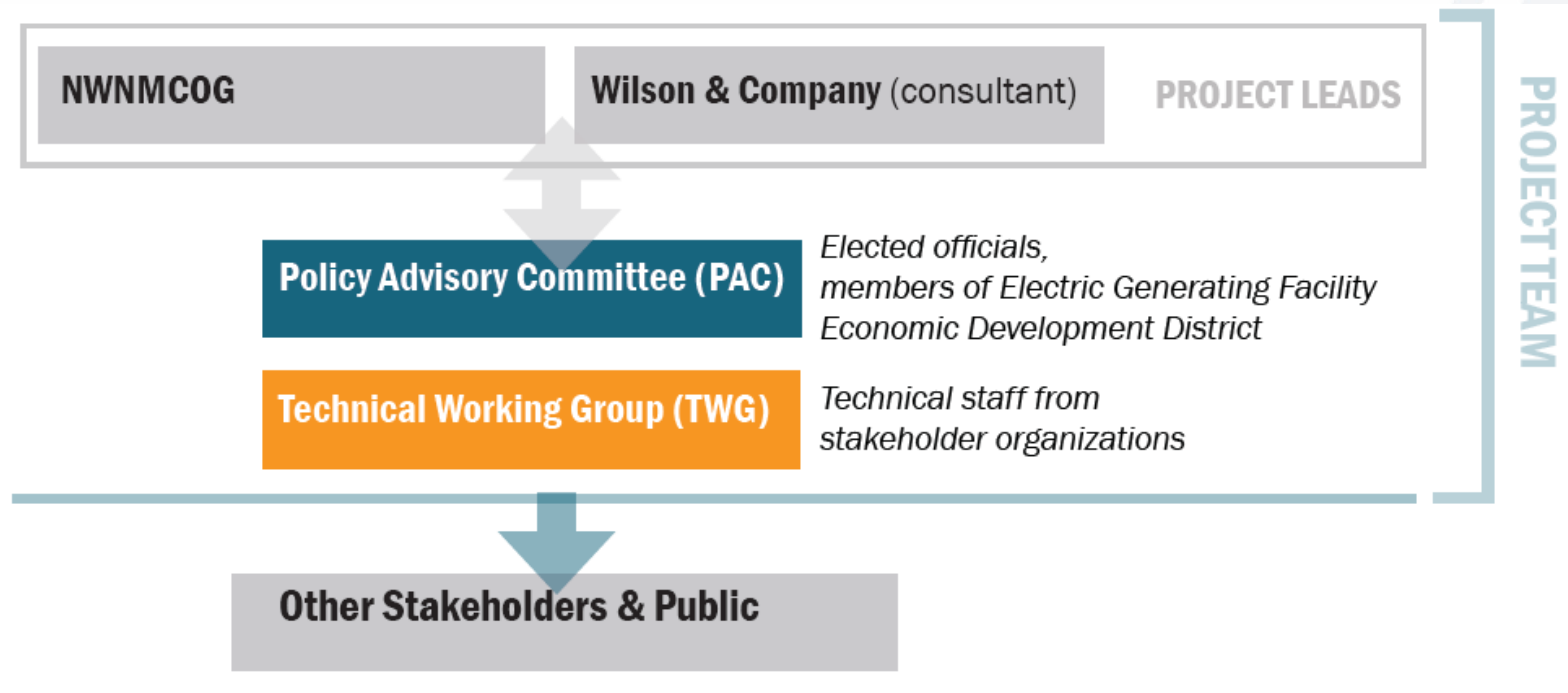
## Project Objective

- The Prewitt-Milan Transportation Master Plan (PMTMP) will coordinate the planning and delivery of projects to improve access to the Milan and Prewitt industrial parks
- This TMP will analyze the multimodal transportation system to support industrial and economic development needs between Prewitt and Milan
- The purpose of the PMTMP is to plan and identify next-step design needs and opportunities, and outline funding in order to construct the infrastructure needed to serve an emerging economic boom in Northwest New Mexico

# Study Area



# TWG and PAC





# TWG and PAC

## Policy Advisory Committee

Responsible for providing direction, approving the project parameters, and establishing criteria for future project evaluations.

- Elected officials or their representatives
- Members of Electric Generating Facility Economic Development District

## Technical Working Group

Senior technical staff from the agencies participating in the PAC and will serve to provide support to the PAC and the Study Team

- McKinley and Cibola counties
- Groups:
  - Community;
  - Economic Development and Industry;
  - Transportation and Infrastructure

## Work Plan

Elements of the project include:

- Promotional Plan
- Stakeholder Outreach Plan
- Formation & Engagement of Policy Advisory Committee (PAC) & Technical Working Group (TWG)
- Public Outreach
- Plan Summary & Inventory of Existing and Future Projects
- Ranking of Projects
- Project Website
- Monitoring System
- Draft and Final Report Document

# Previous Recommendations & Studies

## Prewitt Industrial Park (2020)

- 626-acre site north of the community of Prewitt, in McKinley County, New Mexico
- Commonly referred to as the County Road 19 Site, just south of the Escalante power plant in Prewitt



# Previous Recommendations & Studies

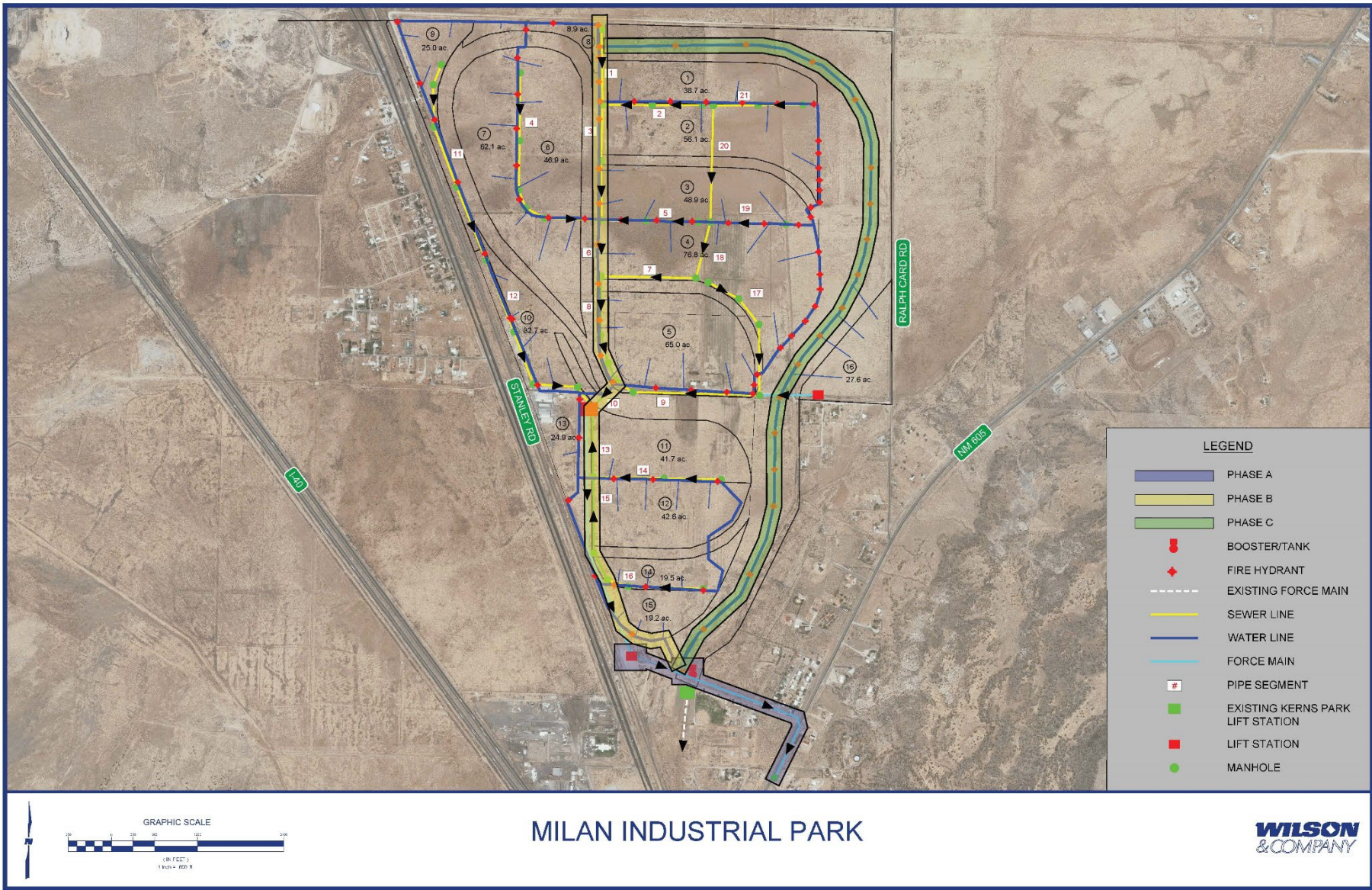
## Milan Industrial Park (2020)

- 913-acre master planned industrial park
- Directly along BNSF Transcon
- Near I-40, truck stop & Grants-Milan Airport
- Phase I design is underway



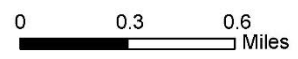
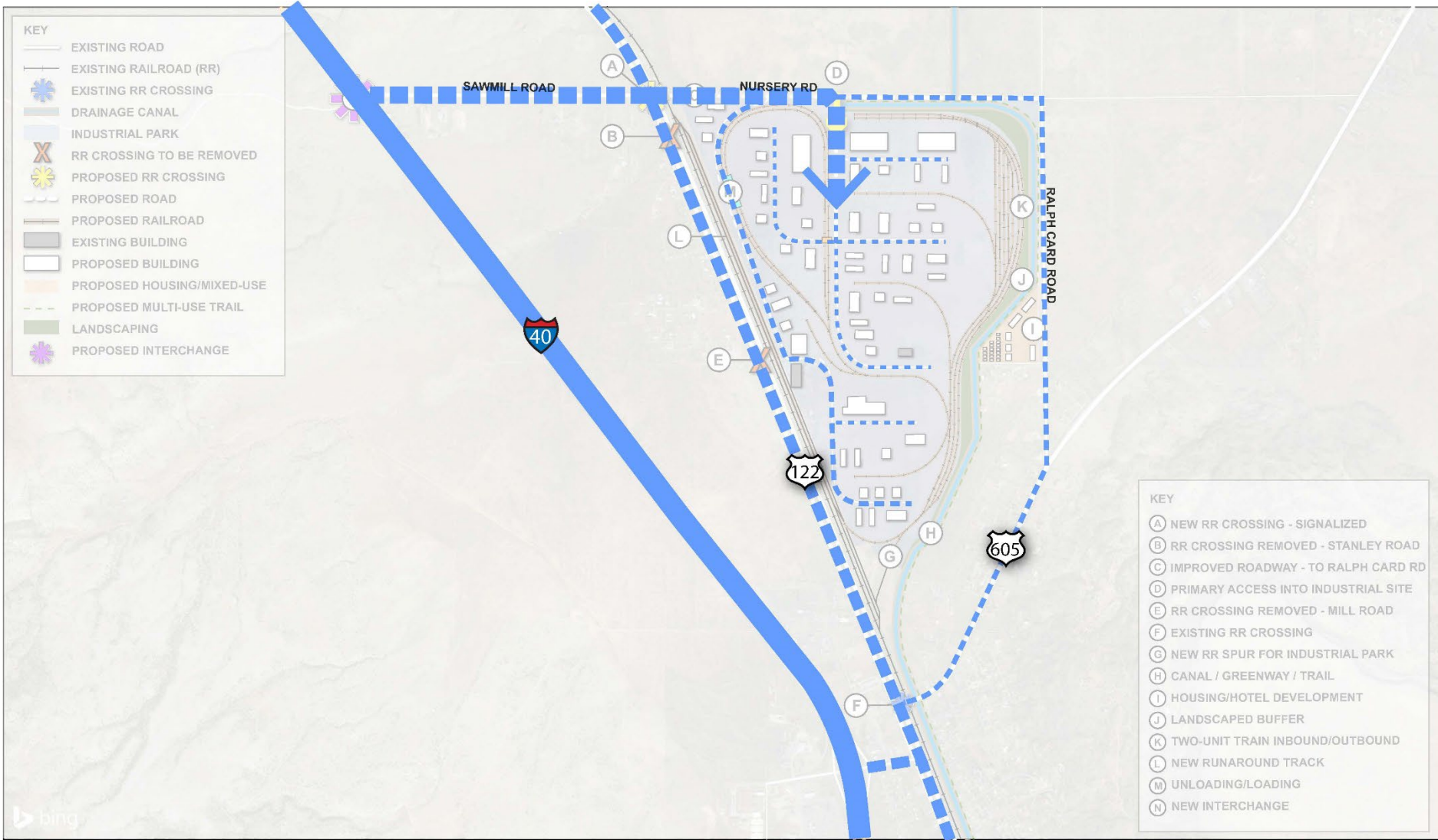


# Previous Recommendations & Studies





# Previous Recommendations & Studies



# Previous Recommendations & Studies

## Statewide/Regional Plans

New Mexico 2040 Plan (statewide LRTP)

New Mexico Freight Plan

New Mexico Statewide Freight Plan

New Mexico DOT STIP

NW New Mexico Regional Transportation Plan

## Navajo Nation Plans

Navajo Nation LRTP & TTIP

Navajo Nation Inland Port

Chapter Community Land Use Plans (CLUPs)

## Local Plans

Village of Milan Comprehensive Plan (2017)

Comprehensive Plan for Cibola County (2015)

McKinley County Comprehensive Plan Update (2012)

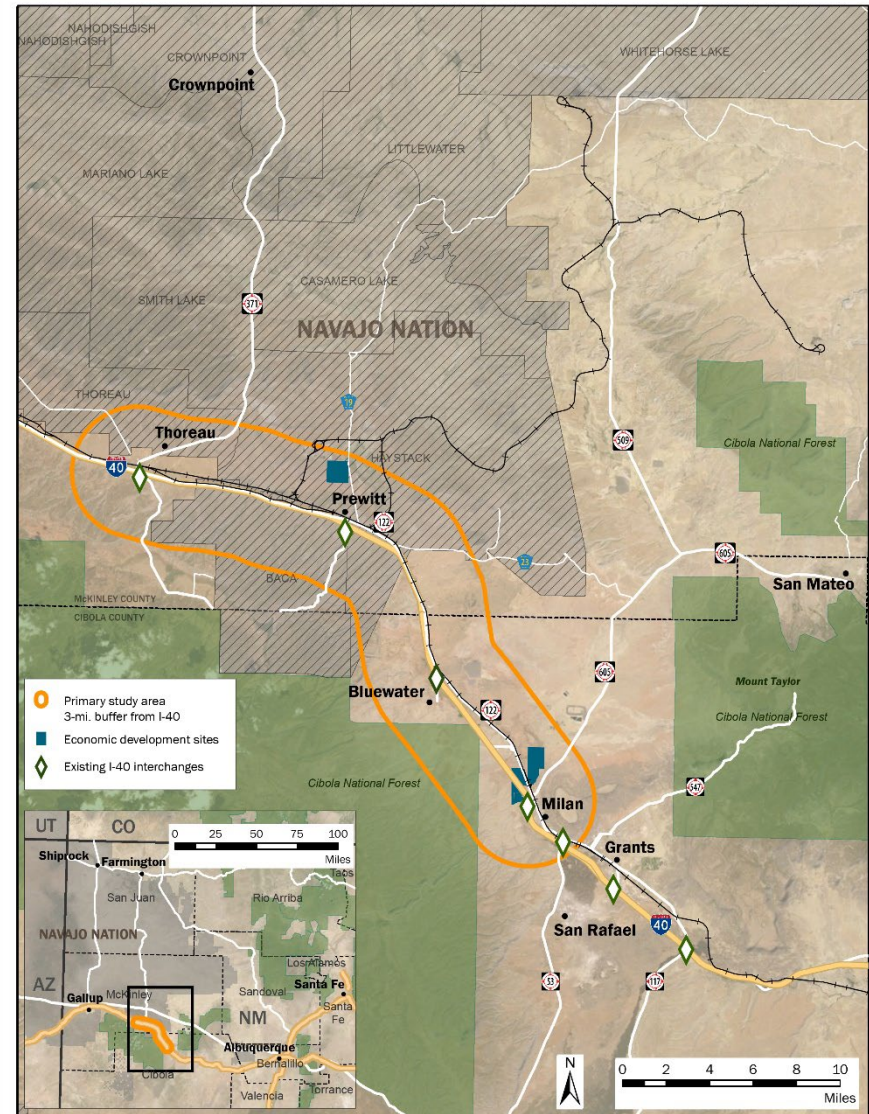
## Development Plans/Site Reports

Prewitt & Milan industrial park master plans

Solid Waste Authority Site Report

# TWG Vision

When you look at the Study Area, what types of transportation investments would help you achieve your economic development goals?





# TWG Vision

I-40 & Bluewater Road Interchange in Thoreau, NM



# TWG Vision

## I-40 & Horizon Blvd in Milan





# TWG Vision



At-grade crossing, NM 605, Milan



NM 371 overpass, Thoreau

## TWG Vision

### Partnerships

BNSF

Escalante H<sub>2</sub> Power

Biopappel McKinley Paper

Others?

# Project Website

HOME

PROGRAMS

FEATURED PROJECTS

## The Prewitt-Milan Transportation Master Plan

The Prewitt-Milan Transportation Master Plan (PMTMP) will coordinate the planning and delivery of projects to improve access to the Prewitt and Milan industrial parks and to other projects in nearby communities. The PMTMP will analyze the multimodal transportation system to support industrial and economic development needs between Prewitt and Milan and in communities such as Bluewater and Thoreau. The purpose of the PMTMP is to plan and identify next-step design needs and opportunities, and outline funding in order to construct the infrastructure needed to serve an emerging economic boom in Northwest New Mexico.



PROJECT OVERVIEW



STUDY AREA AND MAP



PROJECT UPDATES & DOCUMENTS



INTERACTIVE MAP - ADD THE TRANSPORTATION PROJECTS YOU WANT TO SEE



PROJECT SCHEDULE



# Interactive Map

New Development Input Tool
🏠 ?

Development Input

+ Add New Development or Road

MWNMCOG Development Input

---

MWNMCOG Development Input

---

MWNMCOG Development Input

---

MWNMCOG Development Input

---

MWNMCOG Development Input




# Project Website

HOME PROGRAMS FEATURED PROJECTS

## The Prewitt-Milan Transportation Master Plan

The Prewitt-Milan Transportation Master Plan (PMTMP) will coordinate the planning and delivery of projects to improve access to the Prewitt and Milan industrial parks and to other projects in nearby communities. The PMTMP will analyze the multimodal transportation system to support industrial and economic development needs between Prewitt and Milan and in communities such as Bluewater and Thoreau. The purpose of the PMTMP is to plan and identify next-step design needs and opportunities, and outline funding in order to construct the infrastructure needed to serve an emerging economic boom in Northwest New Mexico.



- PROJECT OVERVIEW +
- STUDY AREA AND MAP +
- PROJECT UPDATES & DOCUMENTS +
- INTERACTIVE MAP - ADD THE TRANSPORTATION PROJECTS YOU WANT TO SEE** +
- PROJECT SCHEDULE +

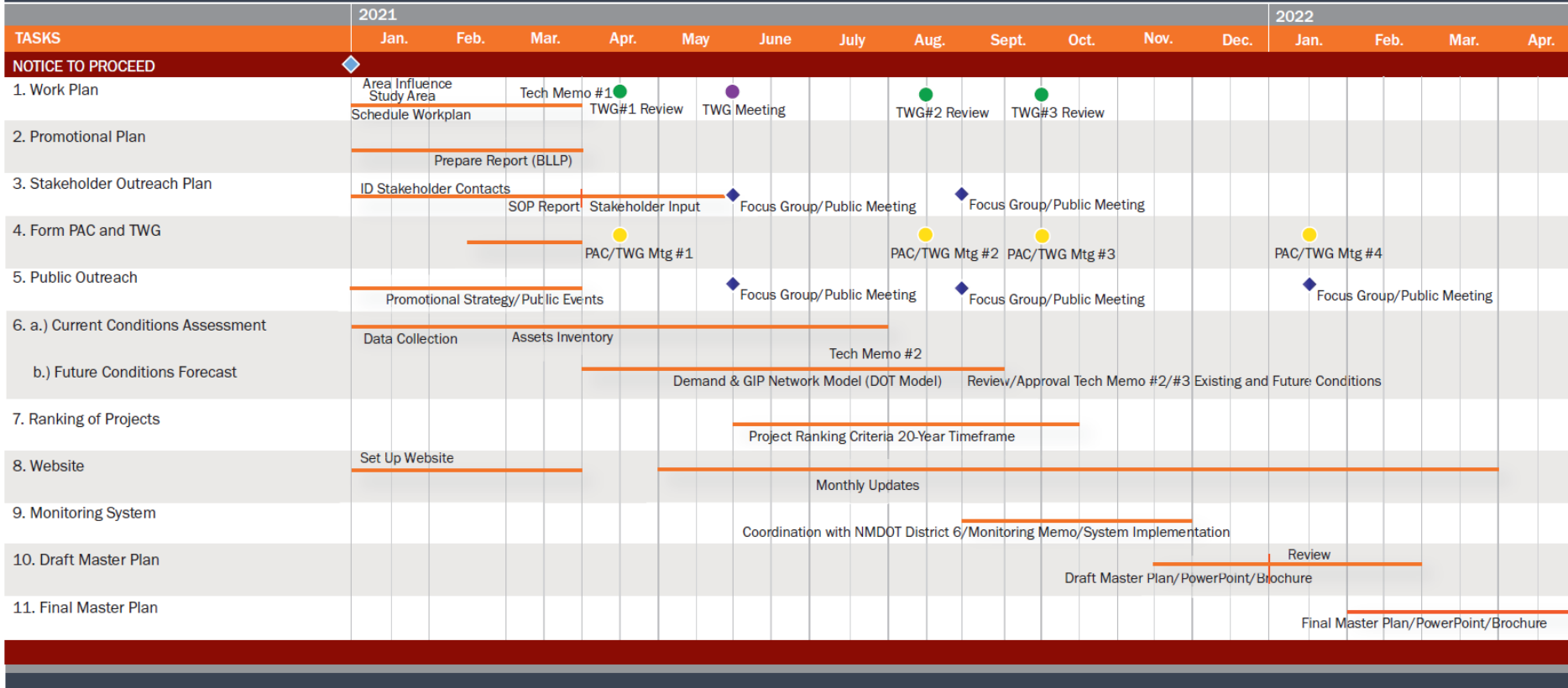
# Project Website

The image shows a screenshot of a project website's navigation menu. The menu consists of several blue horizontal bars with white text and expand/collapse icons. From top to bottom, the items are: 'PROJECT OVERVIEW' with a '+' icon; 'STUDY AREA AND MAP' with a '+' icon; 'PROJECT UPDATES & DOCUMENTS' with a '+' icon; 'INTERACTIVE MAP - ADD THE TRANSPORTATION PROJECTS YOU WANT TO SEE' with a '-' icon. Below this menu item is a grey text block that reads: 'Click the *link below* for an Interactive Map that lets you draw in and describe the projects that you think are needed in the study area. Whether it's a new road, improved railroad crossings, or something else, we want to see your ideas!'. Below the text is a large, light brown rounded rectangle containing an orange button with the text 'INTERACTIVE MAP'. A white arrow points upwards from the bottom of the page towards this button. At the bottom of the menu is 'PROJECT SCHEDULE' with a '+' icon.



# Schedule

## PROJECT SCHEDULE: Prewitt-Milan Transportation Master Plan



## Next Steps

- TWG survey (look for email from us)
- PAC Presentation
- Individual stakeholder interviews based on survey responses
- Schedule first focus group/public meeting tentatively for late May/early June
- Continue working on Current Conditions Assessment

**Next TWG meeting: Early June**

# Thank you!

**Jim Townsend**

Jim.townsend@wilsonco.com

816.701.3108

**Ben Bachwartz**

bbachwartz@wilsonco.com

505.348.4008

**Bob Kuipers**

rkuipers@nwnmcog.org

505.722.4237