

Key Updates

The Prewitt-Milan Transportation Master Plan (PMTMP) has kicked off! The PMTMP will coordinate the planning and delivery of roadway and rail projects to improve access to the Prewitt and Milan industrial parks and potentially to other projects in nearby communities. The project is lead by Northwest New Mexico Council of Governments with consultant Wilson & Company.

- The Project Leads (NWNMCOG and Wilson & Company) convened the first meeting of the Technical Working Group, or TWG. The TWG is one of the main stakeholder groups for the PMTMP. The TWG includes senior technical staff from the key agencies and organizations participating in the PMTMP process.
- The Project Leads and TWG met and discussed the projects, as well as key transportation needs in the study area, including road and rail connections to the industrial parks, safety along the railroad, and transit connections
- The project website has launched. See details about the website on the right.

Project Next Steps

The PMTMP process will last until early 2022. In the meantime, here are some of the key upcoming next steps for the project.

Current conditions assessment	Through July 2021
Future conditions assessment	Through Sept. 2021
Stakeholder focus group meetings	June-July 2021
Public Meeting #1	September 2021

Get Engaged

In order to remain safe during the Covid-19 pandemic, engagement is being conducted virtually for the time being. There are still a number of ways to learn about the project and to share your thoughts about transportation needs in the Prewitt-Milan area.

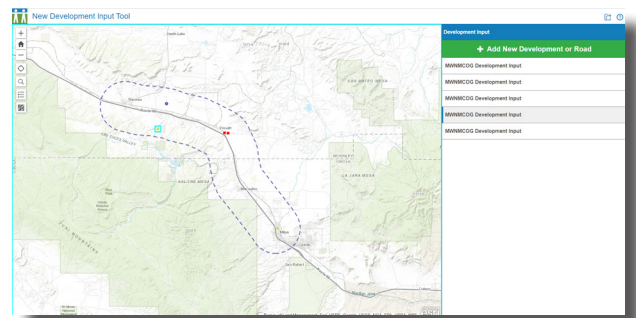
Project website

The project website is the main source of information and updates about the project. See the project schedule and the latest technical reports and more at:

www.nwnmcog.com/prewitt-milan-transportation-plan

Online interactive map

A collector map has been created to allow stakeholders to share their input on transportation needs within the project area. The tool allows users to create points on a map within the study area and to add a description with the point. To access the map, go to the project website and click “Interactive Map.”



Contact the Project Team

Reach out to the project team to ask questions or share your ideas. Points of contact are listed on the following page.

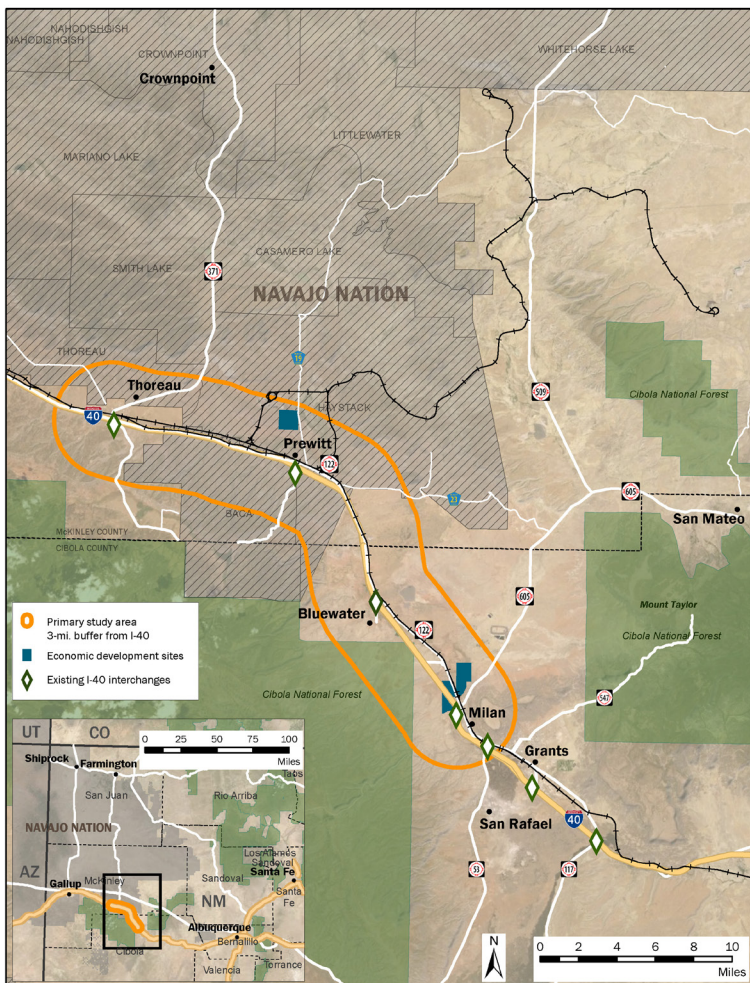


About the Master Plan

The Prewitt-Milan Transportation Master Plan (PMTMP) will coordinate the planning and delivery of projects to improve access to the Prewitt and Milan industrial parks and to other projects in nearby communities. The PMTMP will analyze the multimodal transportation system to support improved safety and to support industrial and economic development needs between Prewitt and Milan and in communities such as Bluewater and Thoreau. The purpose of the PMTMP is to plan and identify next-step design needs and opportunities, and outline funding in order to construct the infrastructure needed to serve an emerging economic boom in Northwest New Mexico.

GOALS of the PLAN

- Evaluate transportation planning issues
- Gather existing data on land use, economics, environmental
- Consider future transportation conditions/Evaluate impacts of growth
- Develop prioritized recommendations for transportation needs
- Build consensus and support for PMTMP projects



PROJECT STAKEHOLDERS

LOCAL GOVERNMENTS

- McKinley County
- Cibola County
- Village of Milan
- Bluewater Village
- Electric Generating Facility Economic Development District

STATE AGENCIES

- NM Department of Transportation
- NM Economic Development Dept.
- State Land Office

NAVAJO NATION

- Navajo Nation Division of Transportation
- Navajo Tribal Utility Association
- Eastern Agency Regional Business Development Organization
- Baca/Prewitt Chapter
- Thoreau Chapter
- Casmero Lake Chapter

AFFILIATES

- BNSF Railway
- Cibola Communities Economic Development Foundation
- Greater Gallup Economic Development
- Continental Divide Electric Coop.
- Solid Waste Authority

STUDY AREA The study will identify transportation projects in the Interstate 40 corridor generally between the Prewitt and Milan industrial park sites. Where applicable, this may include transportation projects beyond the Primary Study Area.

Learn more & add your vision to the interactive map at

www.nwnmcog.com/prewitt-milan-transportation-plan

Project Points of Contact

Bob Kuipers

Northwest New Mexico Council of Governments
rkuipers@nwnmcog.org
505.722.4237

Jim Townsend

Wilson & Company
Jim.townsend@wilsonco.com
816.701.3108